

Appendix A2: Gaelic demolinguistic data

A2.1 Study Districts (SDs)

The following tables (Tables A2.1 to A2.3) provide a summary on reported ability in Gaelic for the 1981, 1991, and 2001 census returns, in order of the most recent census. The tables indicate both the numbers and percentages of those with reported ability in Gaelic both in the entire population and according to Aggregated Age Cohorts in the Study Districts and in the rest of Scotland.

2001 Study District	All people aged 3 and over			Aged 3 to 17			Aged 18 to 49			Aged 50+		
	Total	Speaks Gaelic	Speaks Gaelic (%)	Total	Speaks Gaelic	Speaks Gaelic (%)	Total	Speaks Gaelic	Speaks Gaelic (%)	Total	Speaks Gaelic	Speaks Gaelic (%)
01. West Side of Lewis (central)	970	711	73.30	196	99	50.51	355	251	70.70	419	361	86.16
02. West Side of Lewis (south)	776	546	70.36	155	109	70.32	303	188	62.05	318	249	78.30
03. Uig District	640	439	68.59	101	63	62.38	234	130	55.56	305	246	80.66
04. West Side of Lewis (north)	933	693	74.28	171	106	61.99	355	246	69.30	407	341	83.78
05. Ness	1,151	877	76.19	180	121	67.22	389	270	69.41	582	486	83.51
06. Tolsta	446	323	72.42	74	28	37.84	164	108	65.85	208	187	89.90
07. Loch a Tuath	1,330	872	65.56	306	157	51.31	538	315	58.55	486	400	82.30
08. Tong	505	279	55.25	100	37	37.00	221	101	45.70	184	141	76.63
09. Stornoway, Barvas Road suburbs	1,089	534	49.04	197	62	31.47	540	212	39.26	352	260	73.86
10. Stornoway Town	5,110	2,302	45.05	896	236	26.34	2,142	770	35.95	2,072	1,296	62.55
11. Stornoway, Point Road suburbs	1,248	562	45.03	219	62	28.31	543	188	34.62	486	312	64.20
12. South Point	1,241	736	59.31	257	102	39.69	514	276	53.70	470	358	76.17
13. North Point	686	365	53.21	121	30	24.79	285	123	43.16	280	212	75.71
14. North Lochs	829	513	61.88	131	44	33.59	319	172	53.92	379	297	78.36
15. South Lochs	927	584	63.00	151	64	42.38	369	196	53.12	407	324	79.61
16. North Harris	943	663	70.31	159	94	59.12	305	186	60.98	479	383	79.96
17. South Harris	928	641	69.07	170	92	54.12	302	203	67.22	456	346	75.88
18. North Uist (north & west)	970	656	67.63	196	117	59.69	360	232	64.44	414	307	74.15
19. North Uist (south & east)	655	452	69.01	140	78	55.71	252	174	69.05	263	200	76.05
20. Benbecula	1,197	696	58.15	259	131	50.58	573	306	53.40	365	259	70.96
21. South Uist (north)	875	618	70.63	207	146	70.53	365	258	70.68	303	214	70.63
22. South Uist (south)	1,016	765	75.30	217	130	59.91	363	259	71.35	436	376	86.24
23. Barra and Vatersay	1,135	778	68.55	267	149	55.81	421	281	66.75	447	348	77.85
24. Skye, Staffin	491	308	62.73	100	64	64.00	212	120	56.60	179	124	69.27
25. Isle of Tiree	703	337	47.94	147	74	50.34	255	98	38.43	301	165	54.82
Total: Research Area	26,794	16,250	60.65	5,117	2,395	46.80	10,679	5,663	53.03	10,998	8,192	74.49
Rest of Scotland	4,873,698	42,402	0.87	932,228	6,227	0.67	2,246,729	17,221	0.77	1,694,741	18,954	1.12
Total: Scotland	4,900,492	58,652	1.20	937,345	8,622	0.92	2,257,408	22,884	1.01	1,705,739	27,146	1.59

Table A2.1 Reported ability in Gaelic language in the 2001 Scottish Census (Adapted from Table Ct_0079a_2001 Spoken Ability in Gaelic: Study Districts by Age with Percent)

1991 Study District	All people aged 3 and over			Aged 3 to 17			Aged 18 to 49			Aged 50+		
	Total	Speaks Gaelic	Speaks Gaelic (%)	Total	Speaks Gaelic	Speaks Gaelic (%)	Total	Speaks Gaelic	Speaks Gaelic (%)	Total	Speaks Gaelic	Speaks Gaelic (%)
01. West Side of Lewis (central)	1,099	951	86.53	215	163	75.81	436	374	85.78	448	414	92.41
02. West Side of Lewis (south)	791	631	79.77	131	90	68.70	306	220	71.90	354	321	90.68
03. Uig District	733	586	79.95	94	64	68.09	252	185	73.41	387	337	87.08
04. West Side of Lewis (north)	1,007	842	83.61	211	137	64.93	405	334	82.47	391	371	94.88
05. Ness	1,384	1,231	88.95	273	224	82.05	505	437	86.53	606	570	94.06
06. Tolsta	516	419	81.20	114	68	59.65	193	156	80.83	209	195	93.30
07. Loch a Tuath	1,519	1,151	75.77	354	210	59.32	689	508	73.73	476	433	90.97
08. Tong	385	250	64.94	92	35	38.04	170	107	62.94	123	108	87.80
09. Stornoway, Barvas Road suburbs	1,217	649	53.33	257	64	24.90	573	266	46.42	387	319	82.43
10. Stornoway Town	5,257	2,583	49.13	1,108	233	21.03	2,265	973	42.96	1,884	1,377	73.09
11. Stornoway, Point Road suburbs	1,242	589	47.42	278	45	16.19	571	246	43.08	393	298	75.83
12. South Point	1,388	954	68.73	306	143	46.73	604	390	64.57	478	421	88.08
13. North Point	807	507	62.83	187	83	44.39	362	204	56.35	258	220	85.27
14. North Lochs	985	769	78.07	204	122	59.80	385	290	75.32	396	357	90.15
15. South Lochs	953	724	75.97	170	85	50.00	361	253	70.08	422	386	91.47
16. North Harris	1,134	949	83.69	206	155	75.24	392	319	81.38	536	475	88.62
17. South Harris	1,007	792	78.65	176	118	67.05	364	265	72.80	467	409	87.58
18. North Uist (north & west)	1,012	778	76.88	190	118	62.11	447	324	72.48	375	336	89.60
19. North Uist (south & east)	606	449	74.09	122	77	63.11	272	190	69.85	212	182	85.85
20. Benbecula	1,479	780	52.74	429	177	41.26	764	376	49.21	286	227	79.37
21. South Uist (north)	960	748	77.92	274	203	74.09	433	322	74.36	253	223	88.14
22. South Uist (south)	1,171	955	81.55	294	213	72.45	458	356	77.73	419	386	92.12
23. Barra and Vatersay	1,254	954	76.08	310	212	68.39	545	407	74.68	399	335	83.96
24. Skye, Staffin	435	346	79.54	81	60	74.07	176	136	77.27	178	150	84.27
25. Isle of Tiree	670	397	59.25	134	67	50.00	243	127	52.26	293	203	69.28
Total: Research Area	29,011	19,984	68.88	6,210	3,166	50.98	12,171	7,765	63.80	10,630	9,053	85.16
Rest of Scotland	4,780,669	45,994	0.96	944,747	5,177	0.55	2,261,437	19,601	0.87	1,574,485	21,216	1.35
Total: Scotland	4,809,680	65,978	1.37	950,957	8,343	0.88	2,273,608	27,366	1.20	1,585,115	30,269	1.91

Table A2.2 Reported ability in Gaelic language in the 1991 Scottish Census (Adapted from Table Ct_0079a_1991 Spoken Ability in Gaelic: Study Districts by Age with Percent)

1981 Study District	All people aged 3 and over			Aged 3 to 17			Aged 18 to 49			Aged 50+		
	Total	Speaks Gaelic	Speaks Gaelic (%)	Total	Speaks Gaelic	Speaks Gaelic (%)	Total	Speaks Gaelic	Speaks Gaelic (%)	Total	Speaks Gaelic	Speaks Gaelic (%)
01. West Side of Lewis (central)	1,322	1,261	95.39	315	287	91.11	456	430	94.30	551	544	98.73
02. West Side of Lewis (south)	926	836	90.28	196	166	84.69	307	262	85.34	423	408	96.45
03. Uig District	830	741	89.28	191	164	85.86	255	214	83.92	384	363	94.53
04. West Side of Lewis (north)	932	891	95.60	192	177	92.19	355	332	93.52	385	382	99.22
05. Ness	1,508	1,426	94.56	333	305	91.59	511	477	93.35	664	644	96.99
06. Tolsta	542	494	91.14	137	117	85.40	210	184	87.62	195	193	98.97
07. Loch a Tuath	1,550	1,367	88.19	371	304	81.94	606	530	87.46	573	533	93.02
08. Tong	260	207	79.62	76	50	65.79	126	108	85.71	58	49	84.48
09. Stornoway, Barvas Road suburbs	1,197	833	69.59	304	143	47.04	507	348	68.64	386	342	88.60
10. Stornoway Town	5,282	3,059	57.91	1,339	475	35.47	2,154	1,192	55.34	1,789	1,392	77.81
11. Stornoway, Point Road suburbs	1,288	844	65.53	305	117	38.36	528	331	62.69	455	396	87.03
12. South Point	1,366	1,175	86.02	315	222	70.48	522	448	85.82	529	505	95.46
13. North Point	786	638	81.17	226	151	66.81	283	227	80.21	277	260	93.86
14. North Lochs	1,064	955	89.76	245	204	83.27	395	344	87.09	424	407	95.99
15. South Lochs	1,063	952	89.56	211	170	80.57	336	292	86.90	516	490	94.96
16. North Harris	1,290	1,169	90.62	310	276	89.03	415	369	88.92	565	524	92.74
17. South Harris	1,065	942	88.45	215	181	84.19	354	304	85.88	496	457	92.14
18. North Uist (north & west)	1,154	1,013	87.78	283	244	86.22	438	359	81.96	433	410	94.69
19. North Uist (south & east)	521	449	86.18	127	106	83.46	212	174	82.08	182	169	92.86
20. Benbecula	1,623	850	52.37	560	258	46.07	808	372	46.04	255	220	86.27
21. South Uist (north)	886	761	85.89	261	210	80.46	357	298	83.47	268	253	94.40
22. South Uist (south)	1,439	1,314	91.31	507	453	89.35	519	465	89.60	413	396	95.88
23. Barra and Watersay	1,277	1,101	86.22	434	359	82.72	492	411	83.54	351	331	94.30
24. Skye, Staffin	456	404	88.60	113	101	89.38	163	140	85.89	180	163	90.56
25. Isle of Tiree	732	544	74.32	145	89	61.38	244	170	69.67	343	285	83.09
Total: Research Area	30,359	24,226	79.80	7,711	5,329	69.11	11,553	8,781	76.01	11,095	10,116	91.18
Rest of Scotland	4,813,194	55,081	1.14	1,151,294	5,865	0.51	2,131,560	23,277	1.09	1,530,340	25,939	1.69
Total: Scotland	4,843,553	79,307	1.64	1,159,005	11,194	0.97	2,143,113	32,058	1.50	1,541,435	36,055	2.34

Table A2.3 Reported ability in Gaelic language in the 1981 Scottish Census (Adapted from Table Ct_0079a_1981 Spoken Ability in Gaelic: Study Districts by Age with Percent)

A2.2 Percentage change in Gaelic ability from 1981–2011 in the five highest-scoring Study Districts

The following five charts illustrate the percentage changes of reported ability in Gaelic in the 2011, 2001, 1991 and 1981 census returns in the five Study Districts respectively with the highest percentage of reported ability in Gaelic in the 2011 census, namely South Uist (south), West Side of Lewis (north), South Uist (north), North Harris and Ness (Figures A2.1–A2.5).

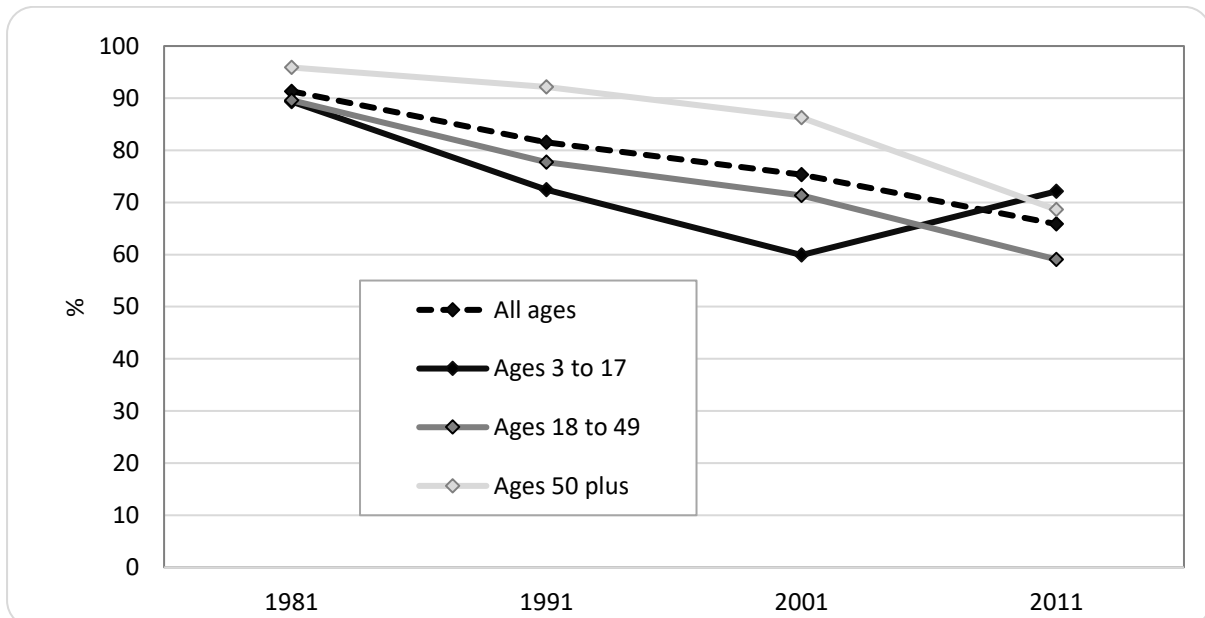


Figure A2.1 Percentage of reported ability in Gaelic by age group in South Uist (south) in the 1981–2011 Census periods

This shows a general decline in all age groups, but with an increase in percentage ability in the 3–17 age group since 2001. The 18–49 age group has the lowest percentage for Gaelic ability in 2011, at 59.1%.

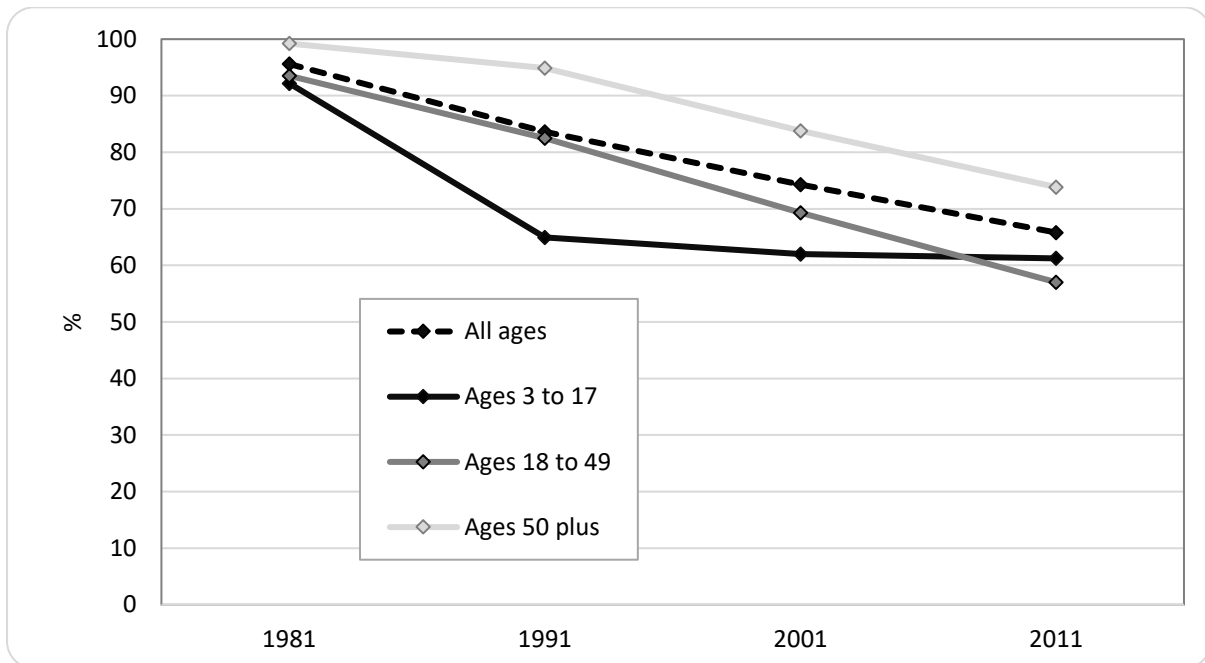


Figure A2.2 Percentage of reported ability in Gaelic by age group in West Side of Lewis (north) in the 1981–2011 Census periods

Figure A2.2 indicates a general decline in all age groups, with the decline in the 3–17 age group levelling out from 1991. The 18–49 age group has the lowest percentage for Gaelic ability in 2011, at 57%.

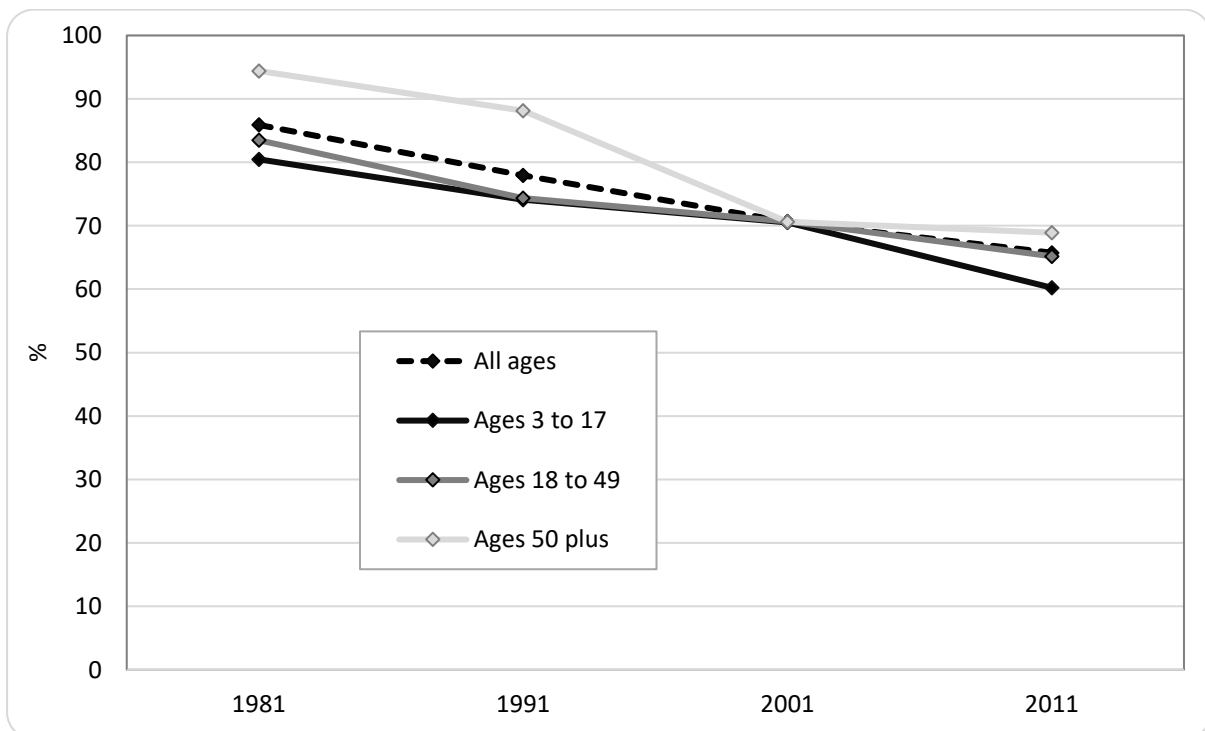


Figure A2.3 Percentage of reported ability in Gaelic by age group in South Uist (north) in the 1981–2011 Census periods

Figure A2.3 demonstrates a general decline in all age groups, with some evidence of levelling-out in the 50+ age group since 1991. The lowest percentage for Gaelic ability in 2011 is the 3–17 age group at 60.2%.

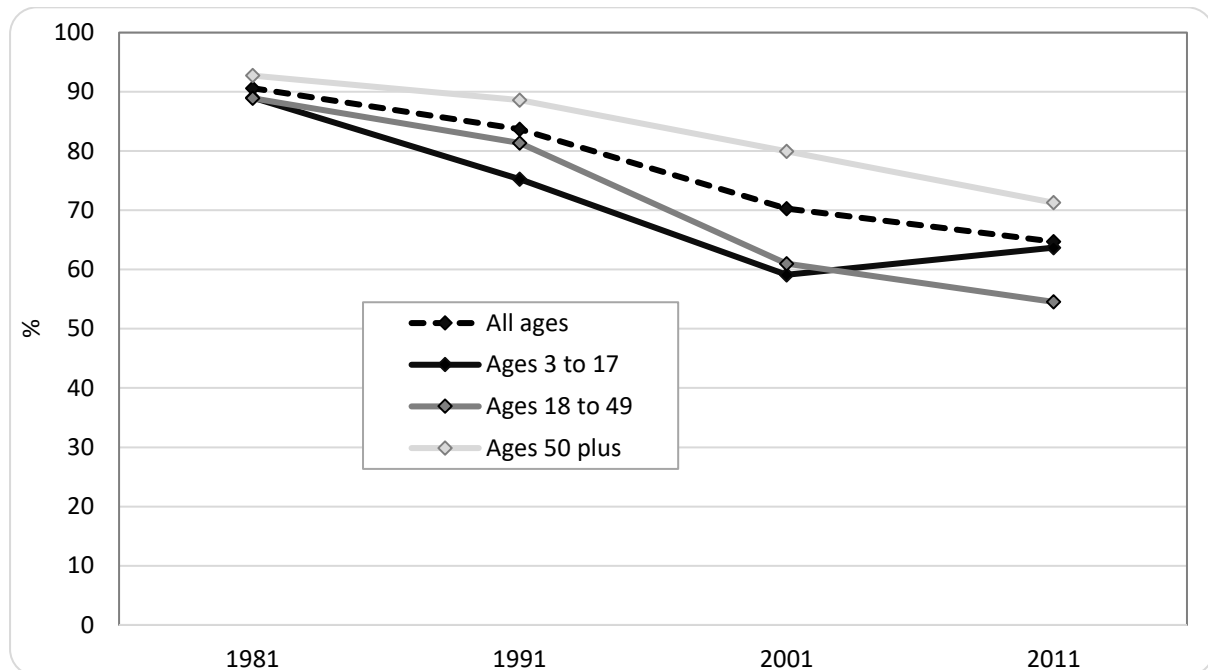


Figure A2.4 Percentage of reported ability in Gaelic by age group in North Harris in the 1981–2011 Census periods

In Figure A2.4 a general decline in reported Gaelic ability is evinced, though there is an increase in reported Gaelic ability in the 3–17 age group since 2001. Lowest Gaelic ability percentage for 2011 is in the 18–49 age group at 54.6%.

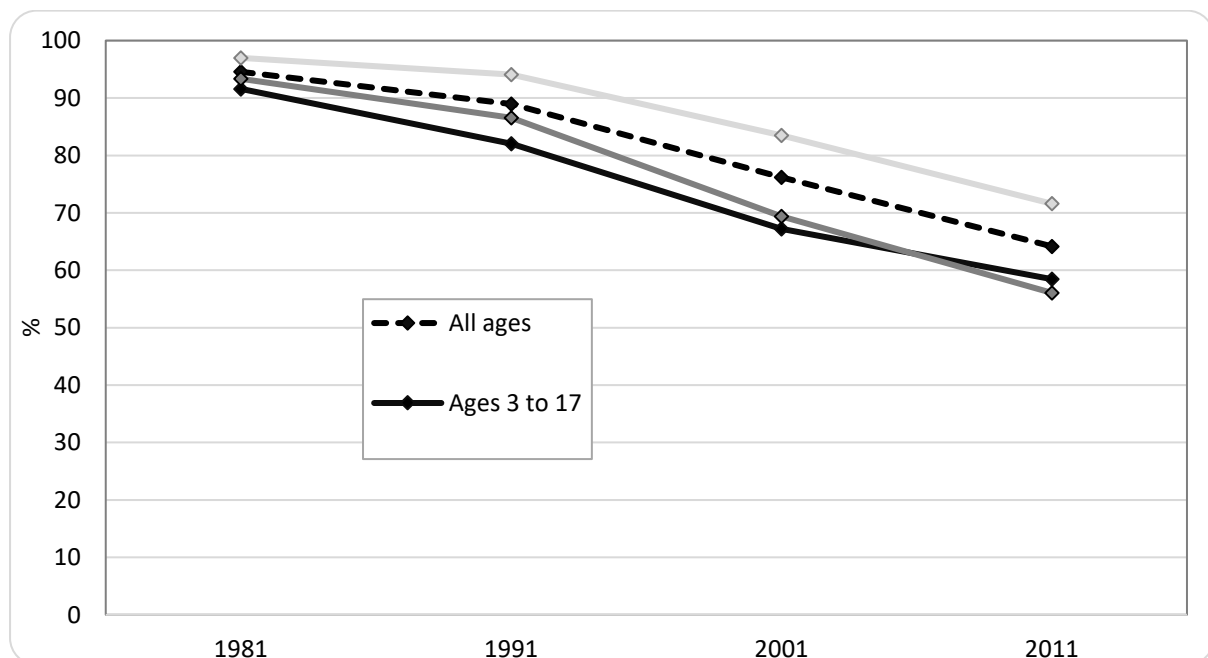


Figure A2.5 Percentage of reported ability in Gaelic by age group in Ness in the 1981–2011 Census periods

Figure A2.5 indicates a general decline in Gaelic language ability in all age groups. The lowest percentage for Gaelic ability in 2011 is in the 18–49 age group at 56.1%.

A2.3 Ability data for Pooled Study Districts (PSDs) from 1981–2011 Census Periods

Tables A2.4 to A2.14 and the corresponding charts in Figures A2.6 to A2.16 provide summaries and illustrations of reported ability (Crude Vitality Rates) in Gaelic according to age cohorts for the seven pooled Study Districts for the 2011, 2001, 1991, 1981 census periods, respectively.

Lewis N & W	Ability in Gaelic (%)			
	1981	1991	2001	2011
All ages	93.4	84.6	73.1	61.4
Age 50+	97.3	92.1	82.9	70.3
Age 18–49	91.0	81.4	66.3	53.1
Age 3–17	89.6	73.4	62.0	51.3

Table A2.4 Percentage of reported ability in Gaelic by age group in the Pooled Study District of Lewis N&W in the 1981–2011 Census periods

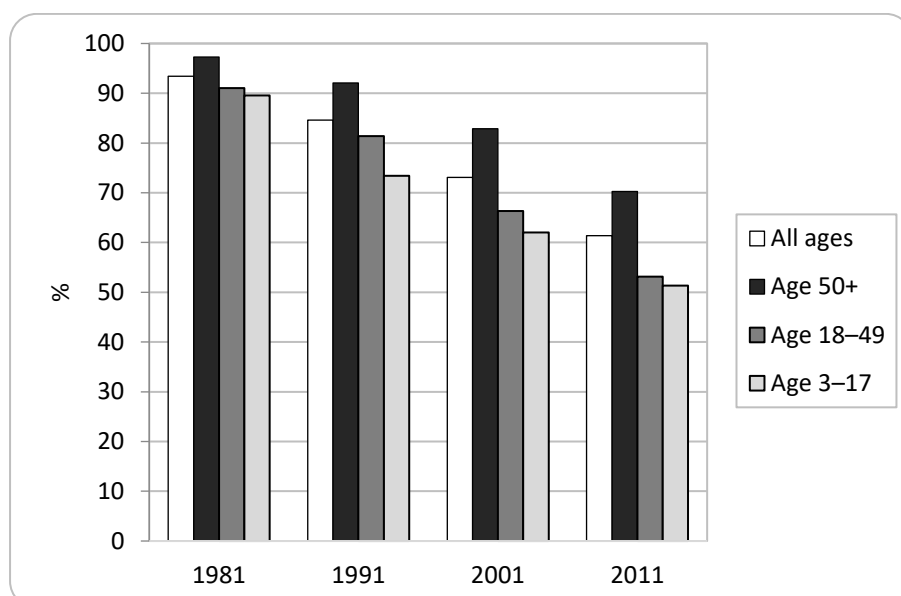


Figure A2.6 Percentage of reported ability by age group in Gaelic in the Pooled Study District of Lewis N&W in the 1981–2011 Census periods

Lewis E	Ability in Gaelic (%)			
	1981	1991	2001	2011
All ages	87.3	72.9	61.6	50.8
Age 50+	94.8	89.8	79.5	65.3
Age 18–49	86.1	69.0	53.6	41.6
Age 3–17	77.0	52.3	40.5	35.7

Table A2.5 Percentage of reported ability in Gaelic by age group in the Pooled Study District of Lewis E in the 1981–2011 Census periods

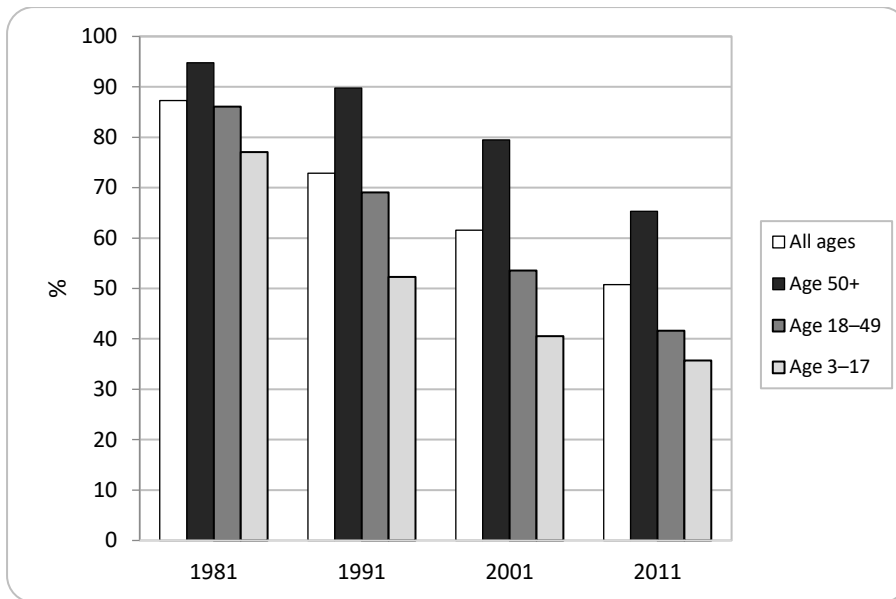


Figure A2.7 Percentage of reported ability by age group in Gaelic in the Pooled Study District of Lewis E in the 1981–2011 Census periods

Stornoway & suburbs	Ability in Gaelic (%)			
	1981	1991	2001	2011
All ages	61.0	49.5	45.6	39.6
Age 50+	81.0	74.8	64.2	54.4
Age 18–49	58.7	43.6	36.3	30.5
Age 3–17	37.7	20.8	27.4	25.8

Table A2.6: Percentage of reported ability in Gaelic by age group in the Pooled Study District of Stornoway in the 1981–2011 Census periods

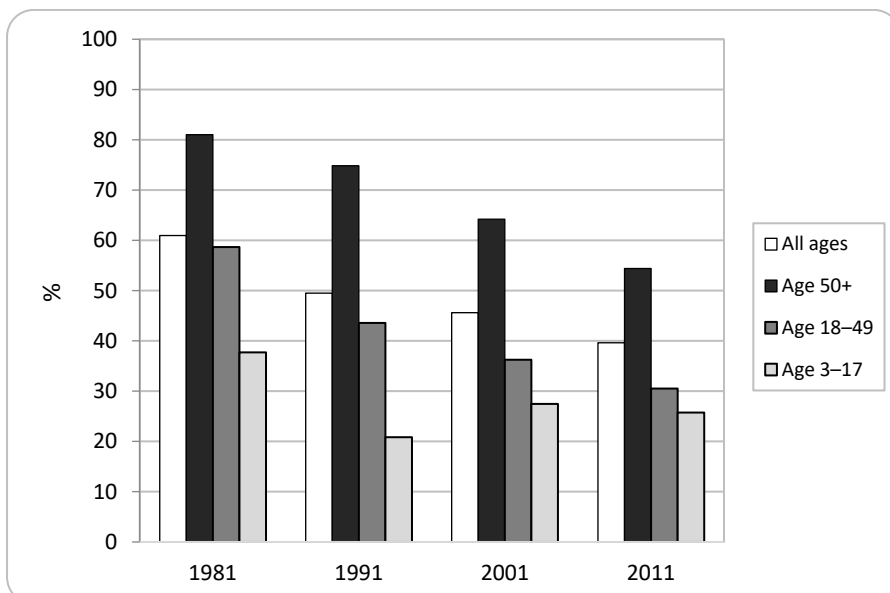


Figure A2.8 Percentage of reported ability in Gaelic by age group in the Pooled Study District of Stornoway in the 1981–2011 Census periods

Harris	Ability in Gaelic (%)			
	1981	1991	2001	2011
All ages	89.6	81.3	69.7	60.9
Age 50+	92.5	88.1	78.0	66.9
Age 18–49	87.5	77.2	64.1	54.4
Age 3–17	87.0	71.5	56.5	53.2

Table A2.7 Percentage of reported ability in Gaelic by age group in the Pooled Study District of Harris in the 1981–2011 Census periods

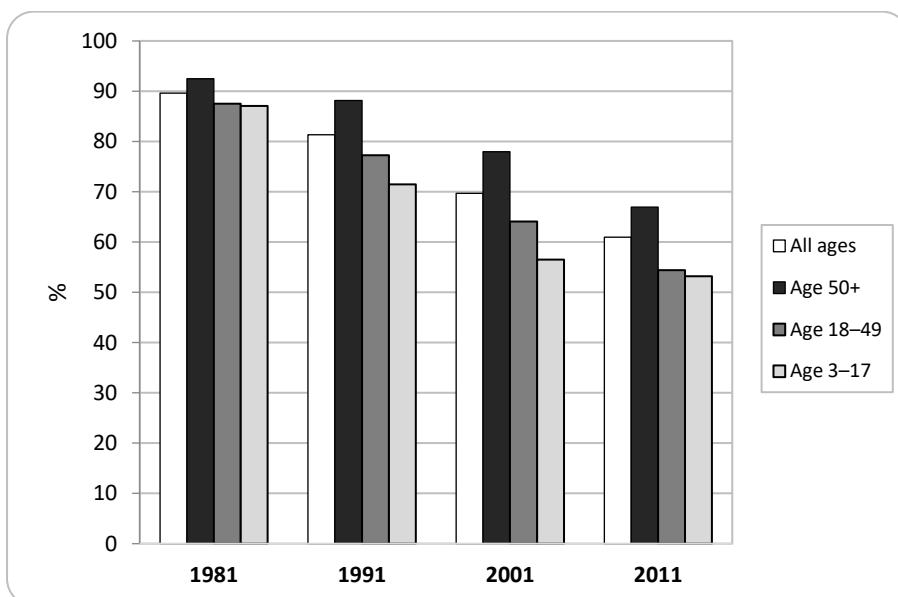


Figure A2.9 Percentage of reported ability in Gaelic by age group in the Pooled Study District of Harris in the 1981–2011 Census periods

North Uist & Benbecula	Ability in Gaelic (%)			
	1981	1991	2001	2011
All ages	70.1	64.8	63.9	57.2
Age 50+	91.8	85.3	73.5	62.4
Age 18–49	62.1	60.0	60.1	53.2
Age 3–17	62.7	50.2	54.8	51.4

Table A2.8 Percentage of reported ability in Gaelic by age group in the Pooled Study District of North Uist and Benbecula in the 1981–2011 Census periods

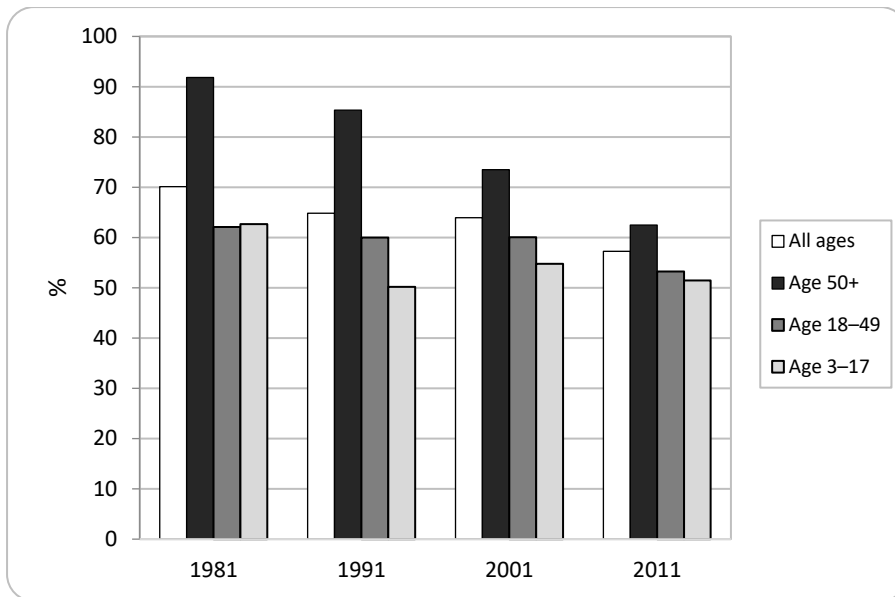


Figure A2.10 Percentage of reported ability in Gaelic by age group in the Pooled Study District of North Uist and Benbecula in the 1981–2011 Census periods

South Uist, Barra & Vatersay	Ability in Gaelic (%)			
	1981	1991	2001	2011
All ages	88.2	78.5	71.4	64.4
Age 50+	95.0	88.1	79.1	69.0
Age 18–49	85.8	75.6	69.5	60.3
Age 3–17	85.0	71.5	61.5	61.3

Table A2.9 Percentage of reported ability in Gaelic by age group in the Pooled Study District of South Uist, Barra and Vatersay in the 1981–2011 Census periods

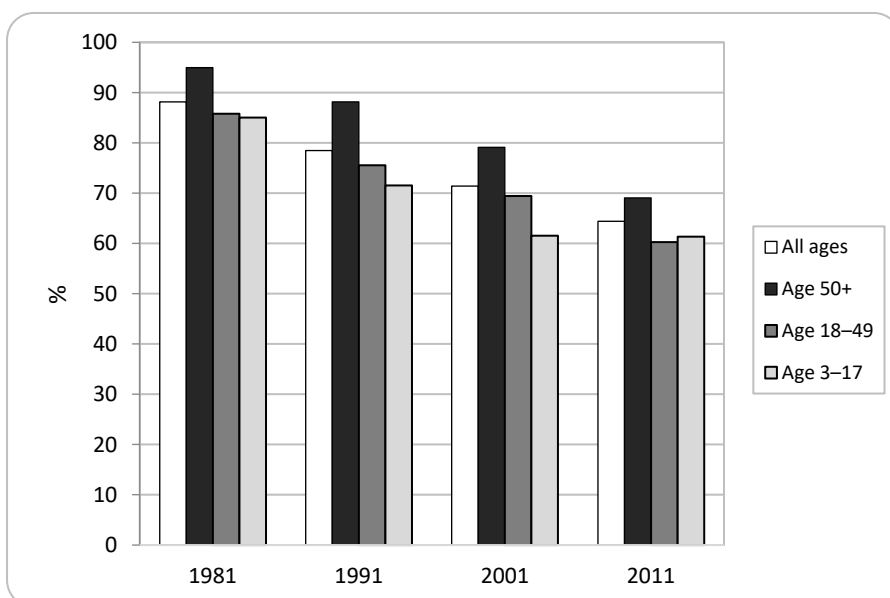


Figure A2.11 Percentage of reported ability in Gaelic by age group in the Pooled Study District of South Uist, Barra and Vatersay in the 1981–2011 Census periods

Staffin & Tiree	Ability in Gaelic (%)			
	1981	1991	2001	2011
All ages	79.8	67.2	54.0	43.2
Age 50+	85.7	74.9	60.2	44.9
Age 18–49	76.2	62.8	46.7	33.6
Age 3–17	73.6	59.1	55.9	59.7

Table A2.10 Percentage of reported ability in Gaelic by age group in the Pooled Study District of Staffin and Tiree in the 1981–2011 Census periods

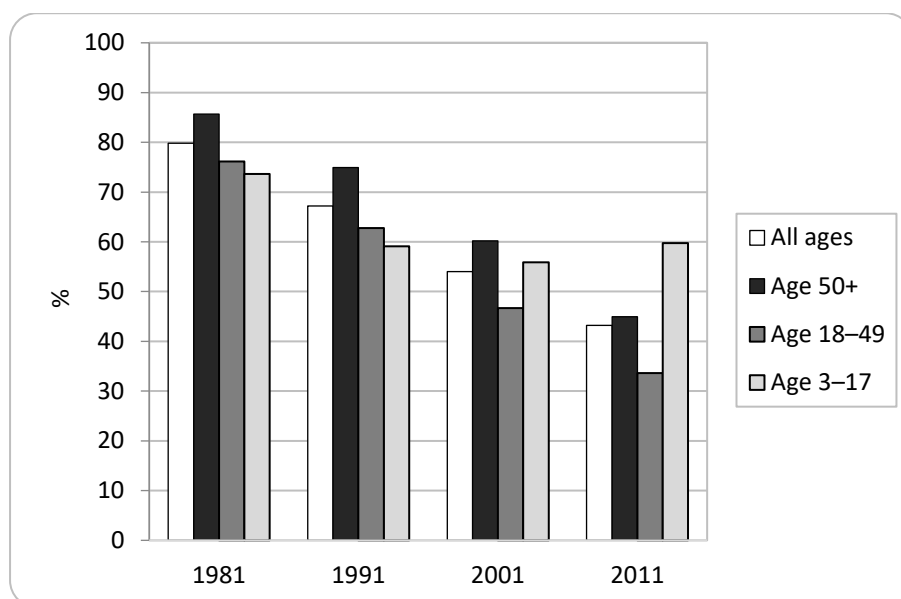


Figure A2.12 Percentage of reported ability in Gaelic by age group in the Pooled Study District of Staffin and Tiree in the 1981–2011 Census periods

Table A2.11 and the corresponding chart in Figure A2.13 provide summaries and illustrations of reported ability (Crude Vitality Rates) in Gaelic according to age cohorts for the pooled Study Districts for the 1981, 1991, 2001 and 2011 Census periods, respectively.

All ages	Ability in Gaelic (%)			
	1981	1991	2001	2011
Lewis N&W	93.4	84.6	73.1	61.4
Lewis E	87.3	72.9	61.6	50.8
Stornoway & suburbs	61.0	49.5	45.6	39.6
Harris	89.6	81.3	69.7	60.9
North Uist & Benbecula	70.1	64.8	63.9	57.2
South Uist, Barra & Vatersay	88.2	78.5	71.4	64.4
Staffin & Tiree	79.8	67.2	54.0	43.2

Table A2.11 Percentage of reported ability in Gaelic in all age cohorts in the Pooled Study Districts in the 1981–2011 Census periods

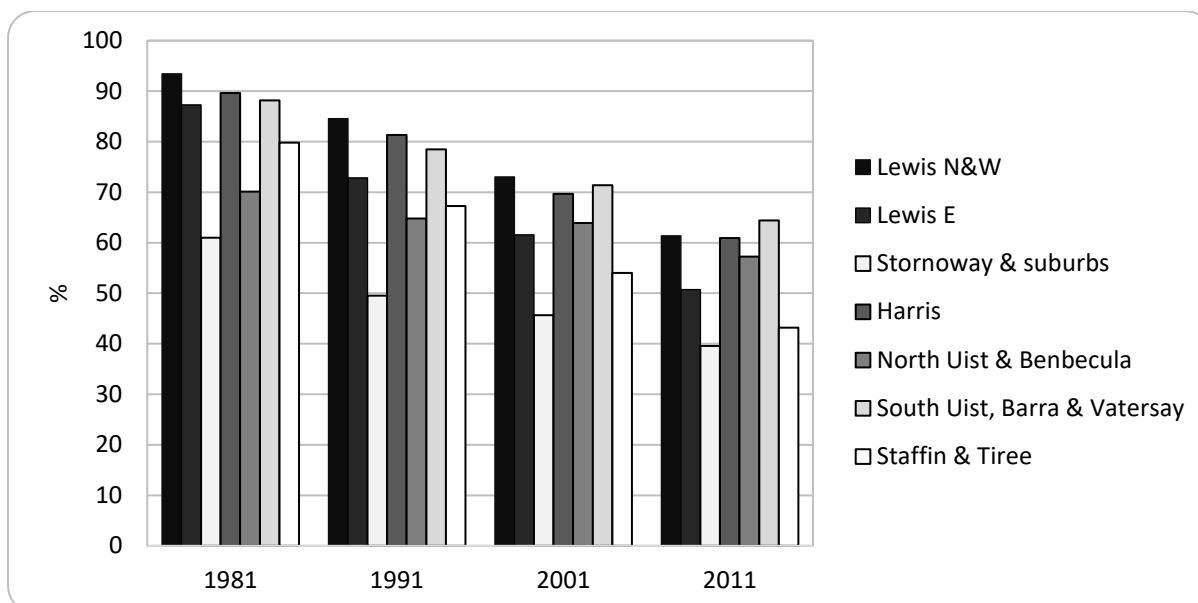


Figure A2.13 Percentage of reported ability in Gaelic by age cohort in the Pooled Study Districts in the 1981–2011 Census periods

The following three tables (A2.12–A2.14) and their corresponding figures (A2.26–A2.28) contain a summary of the Crude Vitality Rates by age cohort for the seven pooled Study Districts in the 1981–2011 period. All the PSDs show a steady decrease in the percentages of reported ability in Gaelic.

Age 3 to 17	Ability in Gaelic (%)			
	1981	1991	2001	2011
Lewis N&W	89.6	73.4	62.0	51.3
Lewis E	77.0	52.3	40.5	35.7
Stornoway & Suburbs	37.7	20.8	27.4	25.8
Harris	87.0	71.5	56.5	53.2
North Uist & Benbecula	62.7	50.2	54.8	51.4
South Uist, Barra & Vatersay	85.0	71.5	61.5	61.3
Staffin & Tiree	73.6	59.1	55.9	59.7

Table A2.12 Percentage of reported ability in Gaelic in the age cohort 3–17 in the Pooled Study Districts in the 1981–2011 Census periods

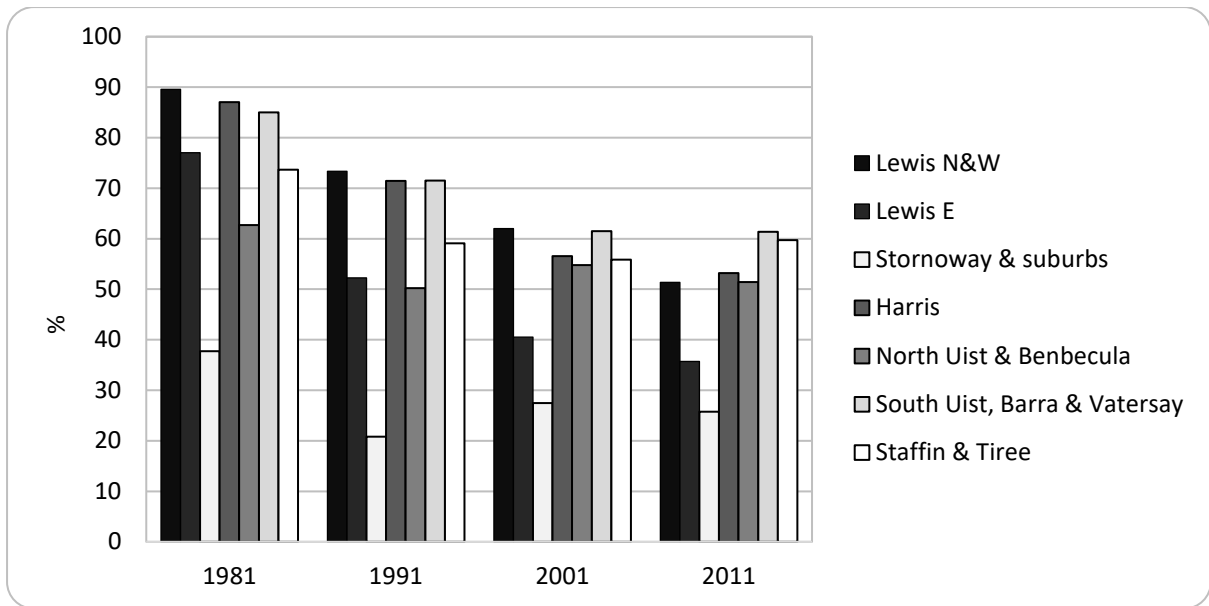


Figure A2.14 Percentage of reported ability in Gaelic in the age cohort 3–17 in the Pooled Study Districts in the 1981–2011 Census periods

Age 18 to 49	Ability in Gaelic (%)			
	1981	1991	2001	2011
Lewis N&W	91.0	81.4	66.3	53.1
Lewis E	86.1	69.0	53.6	41.6
Stornoway & Suburbs	58.7	43.6	36.3	30.5
Harris	87.5	77.2	64.1	54.4
North Uist & Benbecula	62.1	60.0	60.1	53.2
South Uist, Barra & Vatersay	85.8	75.6	69.5	60.3
Staffin & Tiree	76.2	62.8	46.7	33.6

Table A2.13 Percentage of reported ability in Gaelic in the age cohort 18–49 in the Pooled Study Districts in the 1981–2011 Census periods

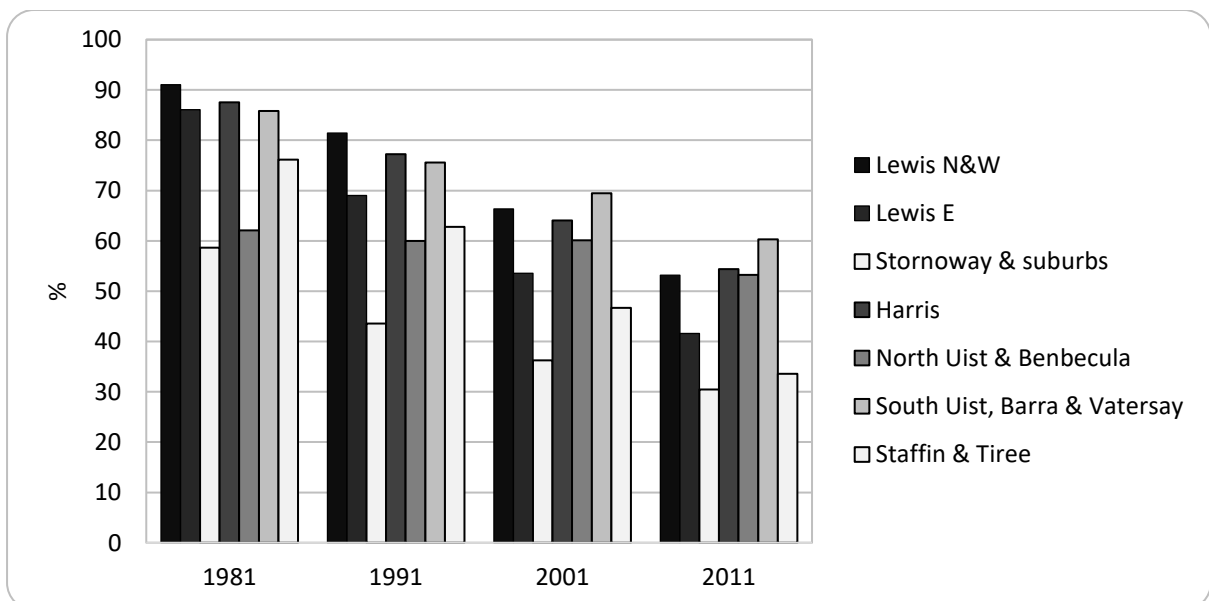


Figure A2.15 Percentage of reported ability in Gaelic in the age cohort 18–49 in the Pooled Study Districts in the 1981–2011 Census periods

Age 50+	Ability in Gaelic (%)			
	1981	1991	2001	2011
Lewis N&W	97.3	92.1	82.9	70.3
Lewis E	94.8	89.8	79.5	65.3
Stornoway & Suburbs	81.0	74.8	64.2	54.4
Harris	92.5	88.1	78.0	66.9
North Uist & Benbecula	91.8	85.3	73.5	62.4
South Uist, Barra & Vatersay	95.0	88.1	79.1	69.0
Staffin & Tiree	85.7	74.9	60.2	44.9

Table A2.14 Percentage of reported ability in Gaelic in the age cohort 50+ in the Pooled Study Districts in the 1981–2011 Census periods

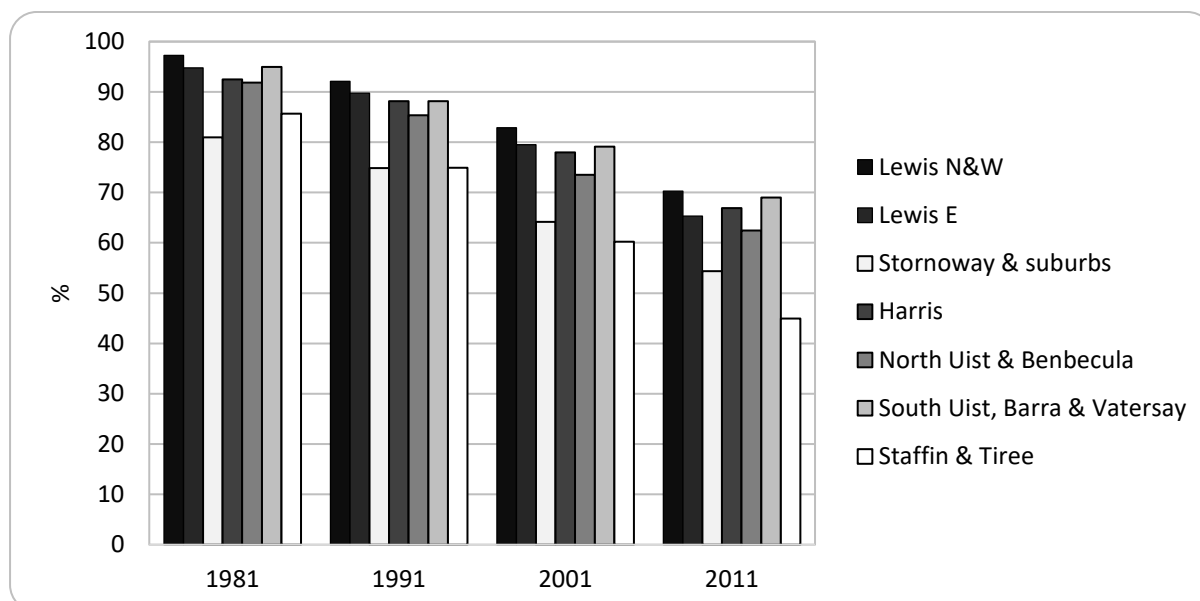


Figure A2.16 Percentage of reported ability in Gaelic in the age cohort 50+ in the Pooled Study Districts in the 1981–2011 Census periods

A2.4 Standardised Incidence Ratios for Gaelic ability data for Study Districts from 1981–2001 Census periods

Standardised Incidence Ratios 2001

2001 AREA	SIRi	E (expect'd)	Aged 3 to 17				Aged 18 to 49				Aged 50+				
			Sum of S within each area	P (pop'l'n)	S (speaks Gaelic)	Rate for Age- group Rj	Rate x Pop Rj,Pij	P (total)	S (speaks Gaelic)	Rate for Age- group Rj	Rate x Pop Rj,Pij	P (total)	S (speaks Gaelic)	Rate for Age- group Rj	Rate x Pop Rj,Pij
			5,117	2,395	0.4680	10,679	5,663	0.5303		10,998	8,192	0.7449			
01. West Side of Lewis (central)	1.201	592.089	711	196	99	0.4680	91.737	355	251	0.5303	188.254	419	361	0.7449	312.097
02. West Side of Lewis (south)	1.161	470.093	546	155	109	0.4680	72.547	303	188	0.5303	160.679	318	249	0.7449	236.866
03. Uig District	1.102	398.545	439	101	63	0.4680	47.273	234	130	0.5303	124.089	305	246	0.7449	227.183
04. West Side of Lewis (north)	1.213	571.449	693	171	106	0.4680	80.036	355	246	0.5303	188.254	407	341	0.7449	303.159
05. Ness	1.211	724.043	877	180	121	0.4680	84.249	389	270	0.5303	206.284	582	486	0.7449	433.510
06. Tolsta	1.168	276.535	323	74	28	0.4680	34.636	164	108	0.5303	86.968	208	187	0.7449	154.931
07. Loch a Tuath	1.103	790.524	872	306	157	0.4680	143.223	538	315	0.5303	285.298	486	400	0.7449	362.003
08. Tong	0.927	301.054	279	100	37	0.4680	46.805	221	101	0.5303	117.195	184	141	0.7449	137.055
09. Stornoway, Barvas Road suburbs	0.833	640.755	534	197	62	0.4680	92.205	540	212	0.5303	286.358	352	260	0.7449	262.192
10. Stornoway Town	0.743	3,098.614	2,302	896	236	0.4680	419.371	2,142	770	0.5303	1,135.888	2,072	1,296	0.7449	1,543.356
11. Stornoway, Point Road suburbs	0.747	752.455	562	219	62	0.4680	102.502	543	188	0.5303	287.949	486	312	0.7449	362.003
12. South Point	0.991	742.944	736	257	102	0.4680	120.288	514	276	0.5303	272.571	470	358	0.7449	350.085
13. North Point	0.877	416.329	365	121	30	0.4680	56.634	285	123	0.5303	151.134	280	212	0.7449	208.562
14. North Lochs	1.000	512.781	513	131	44	0.4680	61.314	319	172	0.5303	169.163	379	297	0.7449	282.303
15. South Lochs	1.025	569.512	584	151	64	0.4680	70.675	369	196	0.5303	195.678	407	324	0.7449	303.159
16. North Harris	1.118	592.948	663	159	94	0.4680	74.420	305	186	0.5303	161.739	479	383	0.7449	356.789
17. South Harris	1.106	579.374	641	170	92	0.4680	79.568	302	203	0.5303	160.149	456	346	0.7449	339.657
18. North Uist (north & west)	1.110	591.016	656	196	117	0.4680	91.737	302	232	0.5303	190.906	414	307	0.7449	308.373
19. North Uist (south & east)	1.144	395.059	452	140	78	0.4680	65.527	252	174	0.5303	133.634	263	200	0.7449	195.899
20. Benbecula	0.999	696.957	696	259	131	0.4680	121.224	573	306	0.5303	303.858	365	259	0.7449	271.875
21. South Uist (north)	1.197	516.136	618	207	146	0.4680	96.886	365	258	0.5303	193.557	303	214	0.7449	225.693
22. South Uist (south)	1.236	618.823	765	217	130	0.4680	101.566	363	259	0.5303	192.496	436	376	0.7449	324.760
23. Barra and Vatersay	1.142	681.176	778	267	149	0.4680	124.969	421	281	0.5303	223.253	447	348	0.7449	332.954
24. Skye, Staffin	1.053	292.557	308	100	64	0.4680	46.805	212	120	0.5303	112.422	179	124	0.7449	133.330
25. Isle of Tiree	0.787	428.231	337	147	74	0.4680	68.803	255	98	0.5303	135.225	301	165	0.7449	224.204

Table A2.15 Standardised Incidence Ratio of reported ability in Gaelic in the Study Districts in the 2001 Census

Standardised Incidence Ratios 1991

1991 AREA	SIRI	E (expect'd)	Aged 3 to 17						Aged 18 to 49				Aged 50+			
			Sum of S within each area	P (pop/'n)	S (speaks Gaelic)	Rate for Age- group Rj	Rate x Pop Rj.Pj	P (total)	S (speaks Gaelic)	Rate for Age- group Rj	Rate x Pop Rj.Pj	P (total)	S (speaks Gaelic)	Rate for Age- group Rj	Rate x Pop Rj.Pj	
																Σ Pj
01. West Side of Lewis (central)	1.236	769.314	951	215	163	0.5098	109.612	436	374	0.6380	278.164	448	414	0.8516	381.538	
02. West Side of Lewis (south)	1.120	563.495	631	131	90	0.5098	66.787	306	220	0.6380	195.226	354	321	0.8516	301.483	
03. Uig District	1.089	538.284	586	94	64	0.5098	47.923	252	185	0.6380	160.774	387	337	0.8516	329.587	
04. West Side of Lewis (north)	1.205	698.953	842	211	137	0.5098	107.573	405	334	0.6380	258.387	391	371	0.8516	332.994	
05. Ness	1.259	977.465	1,231	273	224	0.5098	139.182	505	437	0.6380	322.186	606	570	0.8516	516.098	
06. Tolsta	1.166	359.246	419	114	68	0.5098	58.120	193	156	0.6380	123.132	209	195	0.8516	177.994	
07. Loch a Tuath	1.122	1,025.437	1,151	354	210	0.5098	180.477	689	508	0.6380	439.576	476	433	0.8516	405.384	
08. Tong	0.961	260.115	250	92	35	0.5098	46.904	170	107	0.6380	108.459	123	108	0.8516	104.752	
09. Stornoway, Barvas Road suburbs	0.786	826.181	649	257	64	0.5098	131.024	573	266	0.6380	365.569	387	319	0.8516	329.587	
10. Stornoway Town	0.715	3,614.437	2,583	1,108	233	0.5098	564.884	2,265	973	0.6380	1,445.052	1,884	1,377	0.8516	1,604.502	
11. Stornoway, Point Road suburbs	0.701	840.721	589	278	45	0.5098	141.731	571	246	0.6380	364.293	393	298	0.8516	334.697	
12. South Point	1.006	948.440	954	306	143	0.5098	156.006	604	390	0.6380	385.347	478	421	0.8516	407.087	
13. North Point	0.929	546.015	507	187	83	0.5098	95.337	362	204	0.6380	230.953	258	220	0.8516	219.725	
14. North Lochs	1.120	686.883	769	204	122	0.5098	104.004	385	290	0.6380	245.627	396	357	0.8516	337.252	
15. South Lochs	1.070	676.380	724	170	85	0.5098	86.670	361	253	0.6380	230.315	422	386	0.8516	359.395	
16. North Harris	1.169	811.599	949	206	155	0.5098	105.024	392	319	0.6380	250.093	536	475	0.8516	456.482	
17. South Harris	1.100	719.677	792	176	118	0.5098	89.729	364	265	0.6380	232.229	467	409	0.8516	397.719	
18. North Uist (north & west)	1.109	701.416	778	190	118	0.5098	96.866	447	324	0.6380	285.182	375	336	0.8516	319.367	
19. North Uist (south & east)	1.079	416.281	449	122	77	0.5098	62.198	272	190	0.6380	173.534	212	182	0.8516	180.549	
20. Benbecula	0.821	949.711	780	429	177	0.5098	218.714	764	376	0.6380	487.426	286	227	0.8516	243.571	
21. South Uist (north)	1.185	631.408	748	274	203	0.5098	139.691	433	322	0.6380	276.251	253	223	0.8516	215.467	
22. South Uist (south)	1.195	798.928	955	294	213	0.5098	149.888	458	356	0.6380	292.200	419	386	0.8516	356.840	
23. Barra and Vatersay	1.128	845.558	954	310	212	0.5098	158.045	545	407	0.6380	347.706	399	335	0.8516	339.807	
24. Skye, Staffin	1.134	305.175	346	81	60	0.5098	41.296	176	136	0.6380	112.287	178	150	0.8516	151.593	
25. Isle of Tiree	0.840	472.881	397	134	67	0.5098	68.316	243	127	0.6380	155.032	293	203	0.8516	249.532	

Table A2.16 Standardised Incidence Ratio of reported ability in Gaelic in the Study Districts in the 1991 Census

Standardised Incidence Ratios 1981

1981 AREA	SIRI	E (expect'd)	Aged 3 to 17						Aged 18 to 49				Aged 50+			
			Sum of S within each area	P (pop/'n)	S (speaks Gaelic)	Rate for Age- group Rj	Rate x Pop Rj.Pj	P (total)	S (speaks Gaelic)	Rate for Age- group Rj	Rate x Pop Rj.Pj	P (total)	S (speaks Gaelic)	Rate for Age- group Rj	Rate x Pop Rj.Pj	
																Σ Pj
01. West Side of Lewis (central)	1.182	1,066.663	1,261	315	287	0.6911	217.694	456	430	0.7601	346.588	551	544	0.9118	502.381	
02. West Side of Lewis (south)	1.108	754.468	836	196	166	0.6911	135.454	307	262	0.7601	233.339	423	408	0.9118	385.675	
03. Uig District	1.096	675.931	741	191	164	0.6911	131.998	255	214	0.7601	193.816	384	363	0.9118	350.117	
04. West Side of Lewis (north)	1.182	753.540	891	192	177	0.6911	132.689	355	332	0.7601	269.822	385	382	0.9118	351.028	
05. Ness	1.165	1,223.935	1,426	333	305	0.6911	230.133	511	477	0.7601	388.392	664	644	0.9118	605.410	
06. Tolsta	1.143	432.086	494	137	117	0.6911	94.679	210	184	0.7601	159.613	195	193	0.9118	177.794	
07. Loch a Tuath	1.103	1,239.432	1,367	371	304	0.6911	256.395	606	530	0.7601	460.598	573	533	0.9118	522.440	
08. Tong	1.029	201.173	207	76	50	0.6911	52.523	126	108	0.7601	95.768	58	49	0.9118	52.882	
09. Stornoway, Barvas Road suburbs	0.879	947.383	833	304	143	0.6911	210.092	507	348	0.7601	385.352	386	342	0.9118	351.940	
10. Stornoway Town	0.729	4,193.687	3,059	1,339	475	0.6911	925.370	2,154	1,192	0.7601	1,637.174	1,789	1,392	0.9118	1,631.142	
11. Stornoway, Point Road suburbs	0.822	1,026.947	844	305	117	0.6911	210.783	528	331	0.7601	401.313	455	396	0.9118	414.852	
12. South Point	1.071	1,096.768	1,175	315	222	0.6911	217.694	522	448	0.7601	396.753	529	505	0.9118	482.322	
13. North Point	1.023	623.842	638	226	151	0.6911	156.186	283	227	0.7601	215.098	277	260	0.9118	252.558	
14. North Lochs	1.115	856.129	955	245	204	0.6911	169.317	395	344	0.7601	300.225	424	407	0.9118	386.587	
15. South Lochs	1.092	871.670	952	211	170	0.6911	145.820	336	292	0.7601	255.381	516	490	0.9118	470.469	
16. North Harris	1.119	1,044.810	1,169	310	276	0.6911	214.238	415	369	0.7601	315.426	565	524	0.9118	515.146	
17. South Harris	1.083	869.881	942	215	181	0.6911	148.584	354	304	0.7601	269.062	496	457	0.9118	452.234	
18. North Uist (north & west)	1.097	923.279	1,013	283	244	0.6911	195.579	438	359	0.7601	332.907	433	410	0.9118	394.793	
19. North Uist (south & east)	1.082	414.842	449	127	106	0.6911	87.769	212	174	0.7601	161.133	182	169	0.9118	165.941	
20. Benbecula	0.689	1,233.640	850	560	258	0.6911	387.011	808	372	0.7601	614.130	255	220	0.9118	232.499	
21. South Uist (north)	1.093	696.069	761	261	210	0.6911	180.375	357	298	0.7601	271.342	268	253	0.9118	244.352	
22. South Uist (south)	1.172	1,121.413	1,314	507	453	0.6911	350.383	519	465	0.7601	394.472	413	396	0.9118	376.558	
23. Barra and Vatersay	1.108	993.912	1,101	434	359	0.6911	299.933	492	411	0.7601	373.951	351	331	0.9118	320.028	
24. Skye, Staffin	1.104	366.101	404	113	101	0.6911	78.093	163	140	0.7601	123.890	180	163	0.9118	164.117	
25. Isle of Tiree	0.909	598.398	544	145	89	0.6911	100.208	244	170	0.7601	185.455	343	285	0.9118	312.734	

Table A2.17 Standardised Incidence Ratios of reported ability in Gaelic in the Study Districts in the 1981 Census